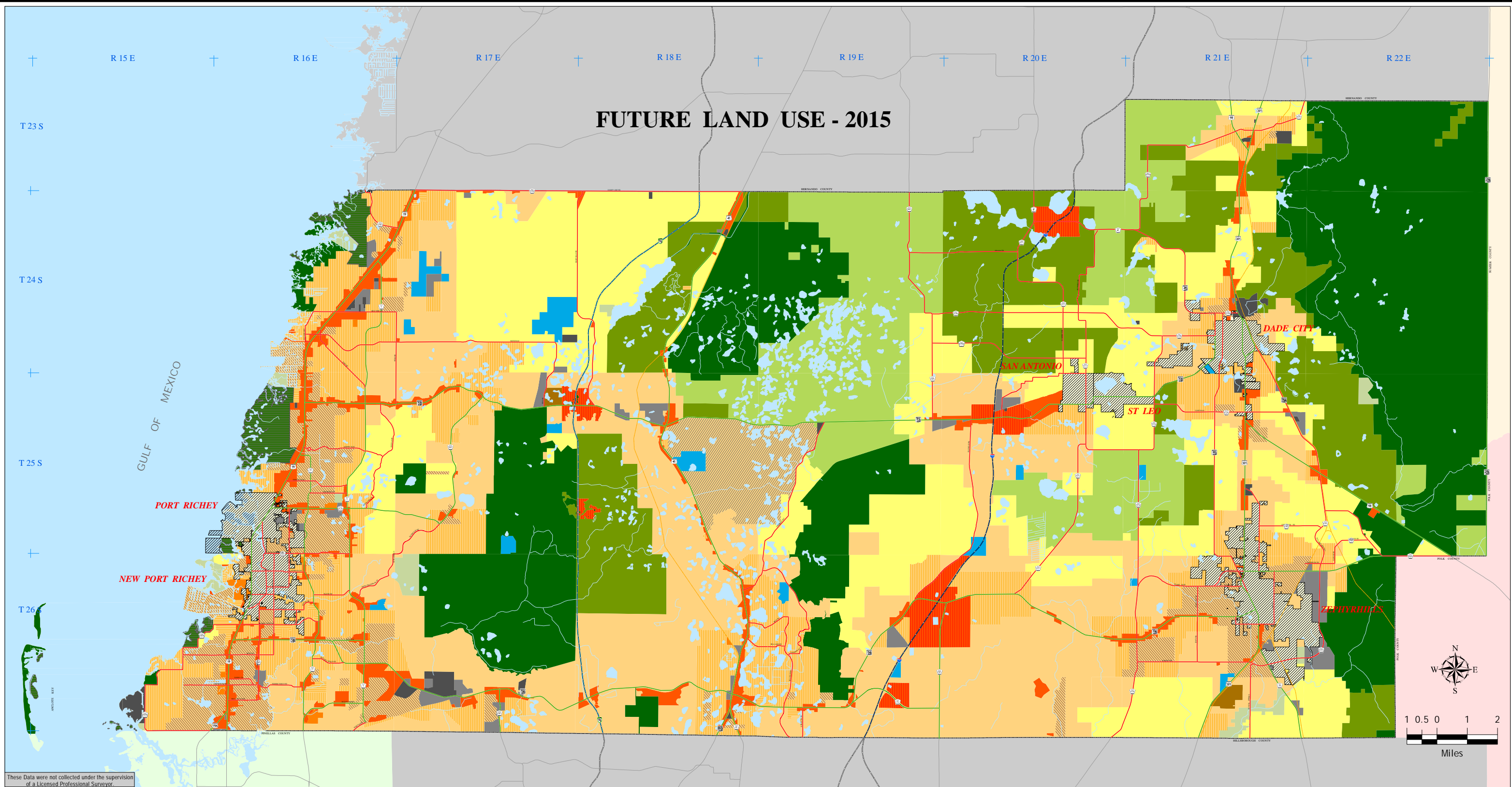


# FUTURE LAND USE - 2015



These Data were not collected under the supervision of a Licensed Professional Surveyor.

- AG AGRICULTURAL - 0.1 du/ga \*
- AG/R AGRICULTURAL / RURAL - 0.2 du/ga \*
- AT MAJOR ATTRACTORS
- C/L COASTAL LAND - .025 du/ga \*
- CON CONSERVATION LANDS

- P/S P MAJOR PUBLIC / SEMI-PUBLIC
- R/OS MAJOR RECREATION / OPEN SPACE
- RES - 1 RESIDENTIAL - 1 du/ga \*
- RES - 3 RESIDENTIAL - 3 du/ga \*
- RES - 6 RESIDENTIAL - 6 du/ga \*

- IH INDUSTRIAL - HEAVY
- IL INDUSTRIAL - LIGHT
- MU MIXED USES
- NT NEW TOWN

- RES - 9 RESIDENTIAL - 9 du/ga \*
- RES - 12 RESIDENTIAL - 12 du/ga \*
- RES - 24 RESIDENTIAL - 24 du/ga \*
- ROR RETAIL / OFFICE / RESIDENTIAL

\* du / ga = dwelling units per gross acre

## Pasco County, Florida

Geographic Information Systems (G.I.S.)  
Engineering Services  
Survey Department



### GROWTH MANAGEMENT

Created: <b>RAJ</b> Feb 11 2005	Revised:
Planned: <b>RAJ</b> Feb 11 2005	
Checked By: <b>BH</b>	Map No: