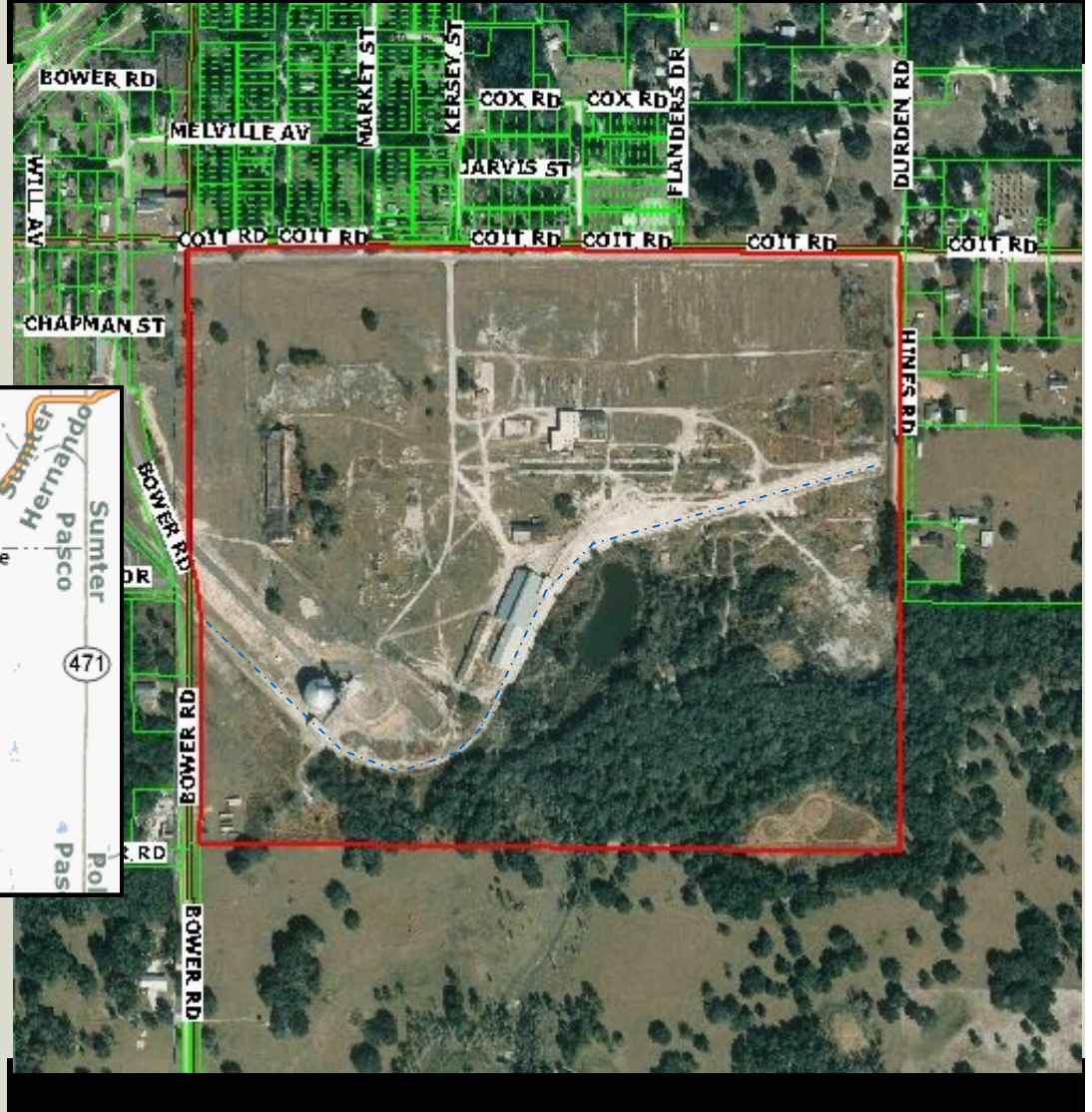
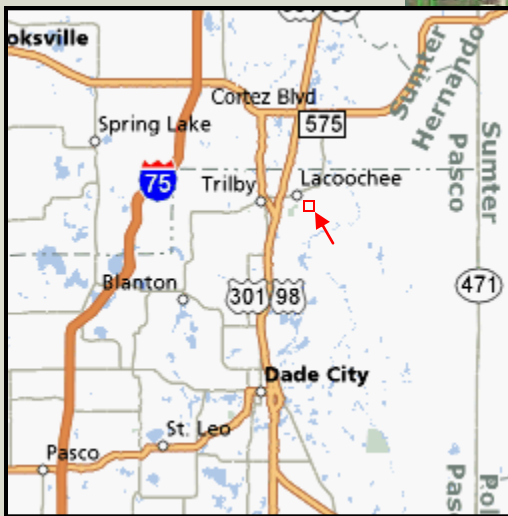


**PASCO**

*The Right Environment!*

# Lacoochee Industrial Park



**L**ocated 1 1/2 miles east of U.S. Highway 301 in the northeast corner of Pasco County, Lacoochee Industrial Park includes 90 acres of I-2, heavy-industrial zoned land. Fifty acres of the park are rail accessible. The electric provider is Withlacoochee River Electric Cooperative.

**Contact: Pasco Economic Development Council**  
16506 Pointe Village Drive, Suite 101  
Lutz, Florida 33558  
(813) 926-0827  
info@pascoedc.com

**PASCO**  
Economic Development Council